



Silent Messenger Message Board Full-Sized

USES AND ADVANTAGES

The "Silent Messenger" full-sized Message Board is the cornerstone of the SolarTech product line. This rugged portable changeable message sign is designed to provide information to improve traffic flow and safety in work zones, for both drivers and workers.

The Silent Messenger consists of a 126" w x 76" h sign panel with a 27 x 48 pixel full matrix LED display on a sturdy steel trailer, powered by a combination of solar panels and batteries. The sign telescopes on a lift and rotate mast, and can be rotated for optimal visibility.

The sign comes with integrated GPS receiver, a cellular transceiver and **FREE lifetime cellular service**. Use with Command Center software for remote communications - messages can be changed from a pc or a smartphone.



EASY-TO-USE CONTROLLER

The touch-screen controller needs no manual - it's that easy to use! Includes:

- GPS receiver, cellular transceiver and free cellular service for the life of the board
- Password protection
- Intuitive icons for ease of use
- Scheduling capability
- Fully networkable
- NTCIP version 2 compatible
- Automatic software upgrades

REMOTE CONTROL AND GPS TRACKING INCLUDED!

Command Center software allows you to track your equipment using the built-in cellular transceiver and GPS system.

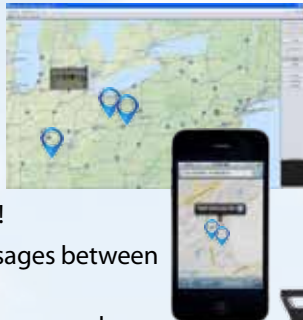
Access units from a map or list. Control units individually or broadcast to a group.

Manage your fleet from your laptop, pc or smartphone... without leaving your desk!

You can build a message library, share messages between boards, schedule messages and more.

Get automatic email notifications when a message changes, if the battery voltage is low, if a pixel fails, or if the unit moves.

Keep tabs on your whole fleet. No more misplaced equipment... fewer problems... less downtime!



Silent Messenger Message Board

DISPLAY

Panel Size	126" x 76" (320 cm x 193 cm)
Panel Construction	All aluminum, modular construction
Panel Face	3/16" polycarbonate, non-glare
Matrix Size	27 x 48 pixels
Pixel Pitch	2.6" x 2.6" (66 mm x 66 mm)
Characters per Line	Up to twelve (12)
Number of Lines	Up to four (4)
Number of Fonts	Twelve (12)
Character Height	13" to 68" (33 cm to 173 cm)
Graphics Capability	Full matrix with full animation
Display Technology	LED (amber, 592 nm)
Display Brightness	>10,000 candela per square meter
Viewing Angle	>30°
Display Life Expectancy	10 years typical
Lifting Mechanism	2,000 lb. capacity electro-hydraulic

TRAILER

Length Overall	180" (457 cm)
Width Overall.....	92" (234 cm)
Height Traveling	103" (262 cm)
Height Operating	162" (412 cm)
Ground Clearance	13" (33 cm) minimum
Weight (minimum).....	2,400 lbs. (1,089 kg)
Weight (maximum)	2,960 lbs. (1,343 kg)
Coupler (Class III)	2" (50 mm) ball or 3" (76 mm) pintle ring
Axle/Suspension	Torq flex independent

MEGA-TECH CONTROL CONSOLE

Console Circuitry	Ultra-low power solid state
Console Touchscreen	Waterproof, backlit, full-color GUI, intuitive icon-driven, multi-lingual
Programming Software	Proprietary with automatic remotely managed upgrades (field upgradable for units not connected to Command Center)
Message Capacity	Pre-programmed and user-defined (> 250 each)
Message Display Time	User-selectable (0.1 to 99 seconds)
Display Update Time	Instantaneous
Non-Volatile Memory	4 GB Micro SD card
Password Protection	User-selectable, multi-level
Operator Interface	Easy-to-use icons (no manual required)
Connectivity	Supports NTCIP version 2 via UDP/IP over Ethernet, UDP/IP over the built-in cellular modem, and PMPP over RS-232.
Remote Control.....	Embedded cellular transceiver with free cellular service and fleet management software included
GPS	Integrated GPS receiver

ENERGY SOURCE

Operating Voltage	12 Volts DC (nominal)
Battery Type	6 Volt heavy duty, deep cycle (GC-2)
Number of Batteries	Four (4) standard lead acid (flooded)
Battery Bank Capacity	520 amp hours
Battery Status Indicator	Displays battery voltage, charging activity and low battery condition
Battery Security	Anti-theft steel battery frame bolted to trailer
Solar Array Construction	Top-mounted solar panels in aluminum frame
Solar Array Power Output	Standard 160 watt (nominal)
Solar Charge Controller	Automatic, temperature compensated
Auxiliary Battery Charger	45 amp, 120 volt AC



OPTIONS AND UPGRADES

DISPLAY PANEL

- High-Definition Display - 30 x 56 pixels 2.3" (58 mm) pixel pitch

SOLAR ARRAY OPTIONS

- Fixed: • 240 watt • 320 watt • 400 watt • 480 watt
Tilt and Rotate: • 160 watt • 240 watt • 320 watt

BATTERY UPGRADES

Type	Number	Capacity
Lead-Acid (flooded)	Six (6)	780 amp hour
	Eight (8)	1040 amp hour
	Ten (10)	1300 amp hour
	Twelve (12)	1560 amp hour
Gel Cell or AGM (maintenance free)	Four (4)	520 amp hour
	Six (6)	780 amp hour
	Eight (8)	1040 amp hour
	Ten (10)	1300 amp hour
	Twelve (12)	1560 amp hour

BATTERY CHARGER UPGRADE

- 90 amp - 120 volt AC

BRAKES

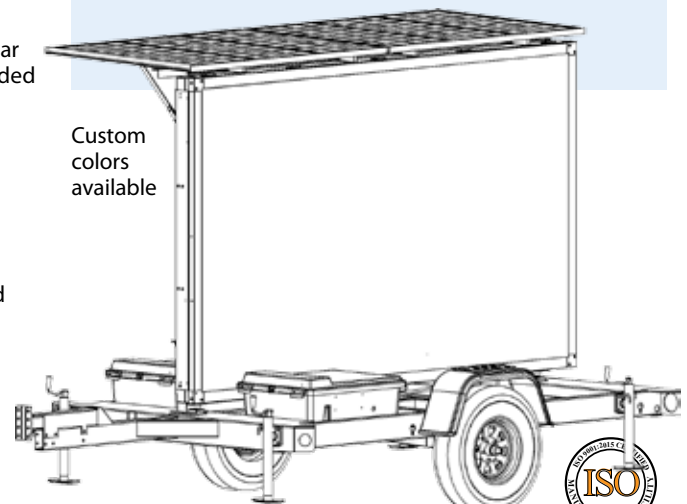
- Hydraulic Surge Brakes (5,000 lb. Capacity)
- Electric Brakes

SECURITY OPTION

- Vandal-Proof Battery Box reinforced steel cage

RADAR OPTIONS

- Directional doppler K-Band. User-configurable KPH or MPH. Data Collection and Statistical Analysis Package included.



SOLAR TECHNOLOGY, INC.
7620 Cetronia Rd. Allentown, PA 18106
Phone: 800-475-5442 or 610-391-8600

www.solartechology.com

