



Silent Messenger III Message Board Mid-Sized

USES AND ADVANTAGES

The "Silent Messenger III" mid-sized message board is a truly reliable workhorse. A 27 x 48 pixel full matrix LED display on a sturdy steel trailer is powered by both solar panels and batteries.

Display sign panel measures 78" wide by 46" high, giving a clean crisp readable message. Available in either a foldable or a Lift and Rotate trailer. Includes GPS receiver, cellular transceiver, and **FREE lifetime cellular service** for use with SolarTech's Command Center software.



REMOTE CONTROL & GPS TRACKING!

Command Center software allows you to track your equipment using the built-in cellular transceiver and GPS system.

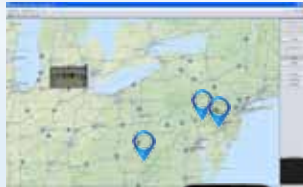
Access units from a map or list. Control units individually or broadcast to a group.

Manage your fleet from your laptop, pc or smartphone... without leaving your desk!

You can build a message library, share messages between boards, schedule messages and more.

Get automatic email notifications when a message changes, if the battery voltage is low, if a pixel or module fails, or the unit moves.

Keep tabs on your whole fleet. No more misplaced equipment... fewer problems... less downtime!



EASY-TO-USE CONTROLLER

The touch-screen controller needs no manual - it's that easy to use! Includes:

- GPS receiver, cellular transceiver and free cellular service for the life of the board
- Password protection
- Intuitive icons for ease of use
- Scheduling capability
- Fully networkable
- NTCIP version 2 compatible
- Automatic software upgrades



Lift and Rotate
Model MB3-LR



Trailer Mounted
Model MB3

Silent Messenger III Message Board



MB III lowered and folded compactly for transport.

DISPLAY PANELS

Panel Size	78" x 46" (198 cm x 117 cm)
Pixel Size	1.50" x 1.50" (38 mm)
Character Height	7.5" to 39" (19 cm to 99 cm)
Matrix Size	27 x 48 pixels
Panel Construction	All aluminum, modular
Panel Face	3/16" polycarbonate, non-glare
Characters per Line	Up to twelve (12)
Number of Lines	Up to four (4)
Number of Fonts	Twelve (12)
Graphics Capability	Full matrix with full animation
Display Technology	LED (amber, 592 mm)
Display Brightness	>10,000 cd/m2 (candela per sq. meter)
Viewing Angle	>30°

TRAILER

	Standard Trailer	Lift & Rotate Trailer
Length Overall (in use)	112" (284 cm)	108" (274 cm)
Length Overall (towing)	112" (284 cm)	152" (386 cm)
Width Overall	92" (234 cm)	77" (196 cm)
Width Across Fenders	75" (190 cm)	77" (196 cm)
Height Traveling	92" (234 cm)	101" (257 cm)
Ground Clearance	13" (33 cm)	13" (33 cm)
Height Operating	142" (360 cm)	142" (360 cm)
Weight	1,360 lbs (617 kg)	1,800 lbs. (816 kg) approx.
Coupler	2" (50 mm) ball or 2.5" (64 mm) pintle ring	2" (50 mm) ball or 3" (76 mm) pintle ring
Lifting Mechanism	1,000 lb. automatic brake, winch and cable	1,000 lb. electric linear actuator
Axle/Suspension	Torq flex, independent	Torq flex, independent

MEGA-TECH CONTROL CONSOLE

Console Circuitry	Ultra-low power solid state
Console Touchscreen	Waterproof, backlit, full-color GUI, intuitive icon-driven, multi-lingual: five international languages
Programming Software	Proprietary, field upgradable
Message Capacity	Pre-programmed and user-programmed: > 250 each
Time-Date Control	Real-time clock/calendar (365 day)
Message Display Time	User-selectable (0.1 to 99 seconds)
Display Update Time	Instantaneous
Non-Volatile Memory	4 GB Micro SD card
Password Protection	User-selectable, multi-level
Operator Interface	Easy-to-use icons (no manual required)
Connectivity	Networkable (wired or wireless) and NTCIP compatible (Ethernet & RS-232)
Remote Control	Embedded cellular transceiver with free lifetime cellular service and fleet management software included
GPS	Integrated GPS receiver

ENERGY SOURCE

Operating Voltage	12 volts DC (nominal)
Battery Type	6 volt heavy duty, deep cycle (GC-2)
Number of Batteries	Two standard lead acid (flooded)
Battery Bank Capacity	260 amp hours
Battery Status Indicator	Displays battery voltage, charging activity and low battery condition
Battery Security	Anti-theft steel battery frame bolted to trailer
Solar Construction	Top-mounted solar panels in aluminum frame
Solar Power Output	Standard 160 watt (nominal)
Solar Charge Controller	Automatic, temperature compensated
Auxiliary Battery Charger	45 Amp, 120 volt AC

OPTIONS AND UPGRADES

UPGRADES - for Lift and Rotate Trailer only

- 30 x 48 pixel display panel at 1.77" (45 mm) pixel pitch
- 30 x 56 pixel display panel at 1.77" (45 mm) pixel pitch
- Tilt and Rotate Solar Arrays:
 - 160 watt
 - 240 watt
 - 320 watt

SOLAR ARRAY UPGRADES - both trailers

- Fixed Solar Arrays: • 240 watt • 320 watt

BATTERY UPGRADES

Type	Number	Capacity
Lead-Acid (flooded)	Four (4)	520 amp hour
	Six (6)	780 amp hour
	Eight (8)	1040 amp hour
Gel Cell or AGM (maintenance free)	Two (2)	260 amp hour
	Four (4)	520 amp hour
	Six (6)	780 amp hour
	Eight (8)	1040 amp hour

BATTERY CHARGER UPGRADE

- 90 amp - 120 volt AC

BRAKE OPTIONS

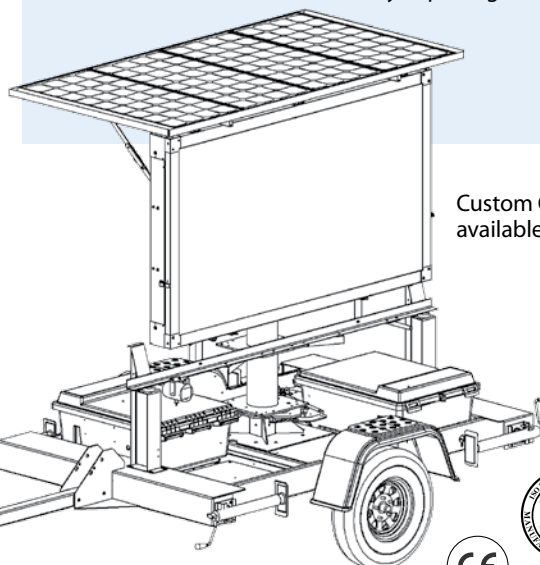
Hydraulic surge brakes (5,000 lb. capacity) or Electric brakes

SECURITY OPTION

Vandal-Proof Battery Box reinforced steel cage

RADAR OPTIONS

Directional doppler K-Band, user-configured KPH or MPH
Data collection and statistical analysis package included.



Custom Colors available



SOLAR TECHNOLOGY, INC.
7620 Cetronia Rd. Allentown, PA 18106
Phone: 800-475-5442 or 610-391-8600

www.solartechnology.com



Made in the USA