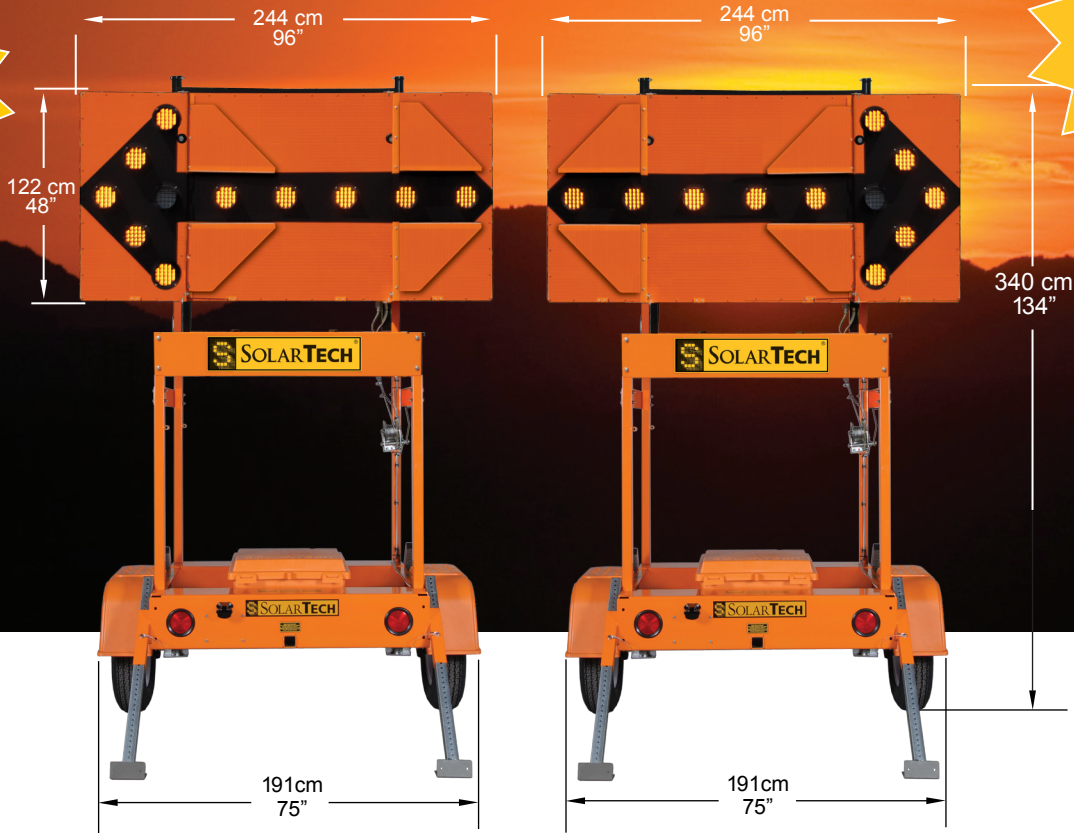




Harness the Power of the Sun

# SILENT SENTINEL

## ADVANCED WARNING ARROW PANELS



Model	Solar Array	Lamps
AB-0515	40 Watt	15
AB-0715	80 Watt	15

### PAR 46 - LED Lamp

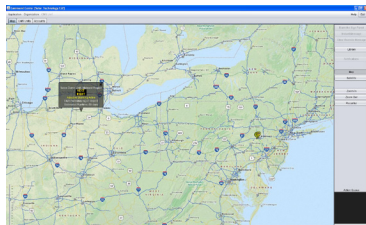
Designed and Built Exclusively by Solar Technology. Independent laboratory tests confirm our custom LED lamp is the brightest in the industry and has the greatest overall angularity.

Compared to other solar arrow board lamps, SolarTech's PAR 46 LED lamp:



- Is twice as bright
- Has superior angularity
- Provides enhanced conspicuously
- Is protected by a 10 year warranty

### Remote Control and GPS Tracking\*



ITS integration and fleet management

\* Requires Solar Comm modem service

### Control Module



Advanced Design Solid State Control Module  
Microprocessor based technology for enhanced reliability. Fully-automatic fault protection.

#### Multi-Color LED Indicators

Display battery level, solar charger status and lamp intensity.

"Auto Track" Intensity Control.

Provides optimal visibility with minimal energy consumption.

#### Integral Solar Charge Controller

Fully automatic, temperature compensated. All solid state.



## LAMP PANEL

Panel Size .....	96" x 48" (244 cm x 122 cm)
Panel Construction .....	All aluminum with welded frame
Panel Finish.....	Matte black baked enamel finish
Number of Lamps .....	15
Lamp Intensity .....	1,000 Candela (typical), 750 Candela (minimum)
Lamp Beam Angle.....	30° horizontal x 6° vertical (minimum)
Lamp Construction.....	LED (21 per lamp) in unbreakable sealed polycarbonate housing
Lamp Shrouds .....	360° high-impact plastic
Rear Panel Indicators .....	Three (3) LED

## TRAILER

Length Overall .....	100" (254 cm)
Length excluding Tongue .....	53" (135 cm)
Width Overall .....	96" (244 cm)
Width Across Fenders.....	75" (190 cm)
Height Traveling .....	92" (234 cm)
Height Operating .....	134" (340 cm)
Ground Clearance .....	13.5" (34 cm)
Weight .....	1,180 lbs. (535 kg) approximately
Hitch.....	2" ball (50 mm) (Class II) or 2.5" (64 mm) pintle ring
Lifting Mechanism .....	1,000 lb. (454 kg) capacity (minimum) automatic brake winch and cable

## ENERGY SOURCE

Operating Voltage.....	12 Volts DC (nominal)	
Battery Type.....	6 volt heavy duty, deep cycle (GC-2)	
Number of Batteries .....	Two (2) standard lead acid (flooded) with Auxiliary Batteries .....	Four (4) standard lead acid (flooded)
Battery Capacity.....	260 amp hours with Auxiliary Batteries .....	520 amp hours
Battery Status Indicator .....	Displays full charge, normal and low battery condition	
Solar Array Construction .....	Top-mounted solar panels in aluminum frame	
Solar Array Power Output .....	40 or 80 watts - field-upgradable	
Solar Charge Controller.....	Fully automatic, temperature compensated	

## CONTROLLER

Controller Circuitry .....	Ultra-low power solid state
Lamp Patterns.....	All standard 15 and 25 lamp flashing and sequential
Lamp Flash Rate.....	30 per minute
Lamp Dimming .....	Manual and automatic
Lamp Dimming Ratio.....	50%, fully dimmed at approximately five footcandles
Lamp Power Drivers .....	Current limited and thermal overload protected with "soft start" feature
Low Voltage Disconnect.....	10.70 volts
High Voltage Disconnect .....	15.10 volts

## OPTIONAL FEATURES AND UPGRADES

### Battery Upgrades

- Four (4) standard flooded batteries
- Two (2) maintenance-free (Gel-Cell or AGM)
- Four (4) maintenance-free (Gel-Cell or AGM)

### Auxiliary Battery Chargers

- 45 amp, 120 volt AC line-powered

### Traffic Cone Carrier

- Holds standard 18" (46 cm) and 28" (71 cm) cones

## OTHER SOLAR TECH PRODUCTS

### SILENT SENTINEL

Trailer and Vehicle Mount Arrow Boards

### SILENT MESSENGER

Full-Size Trailer-Mount Message Boards

### SILENT MESSENGER II

Mid-Size Trailer and Vehicle Mount Message Boards

### SILENT MESSENGER III

Small-Size Trailer and Vehicle Mount Message Boards

### SILENT MESSENGER IV

Small-Size Trailer and Vehicle Mount Message Boards

### SILENT ADVISOR

Low and High-Speed Application Radar Speed Trailers

### INCIDENT RESPONSE TRAILER

Work Zone Trailer with Cones and Barrels

### SOLAR-POWERED PORTABLE TOWER TRAILER

Platform for Cameras, Sensors and/or Lighting

### SOLARTRAK

Monitoring and GPS Tracking of Construction Equipment

*For the latest software updates, user-guides,  
news and information please visit us online at:*

**[www.solartechnology.com](http://www.solartechnology.com)**



**SOLAR TECHNOLOGY, INC.**  
7620 Cetronia Rd. Allentown, PA 18106  
Phone: 800-475-5442 or 610-391-8600  
**[www.solartechnology.com](http://www.solartechnology.com)**