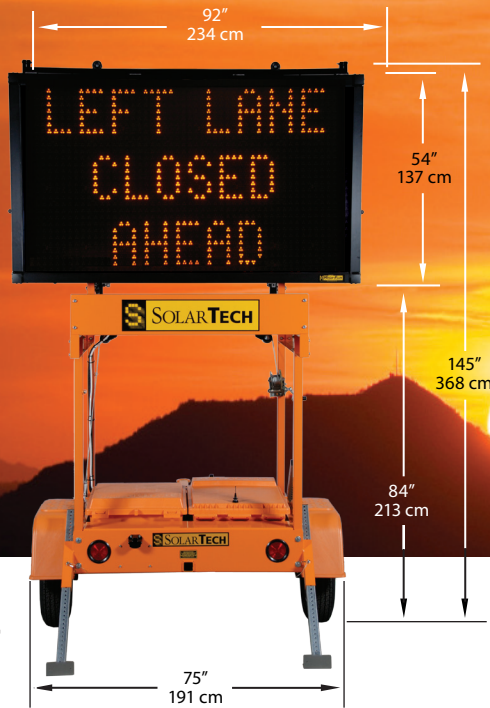




Harness the Power of the Sun

# SILENT MESSENGER II

DYNAMIC MESSAGE SIGNS  
FOR LIMITED-SPACE APPLICATIONS



Standard Trailer



Lift and Rotate Trailer

## Powerful Control Technology included with each unit:

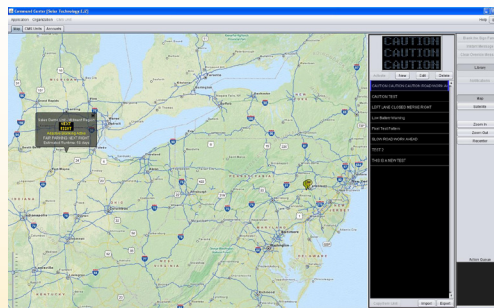


- Intuitive, 10.4" LCD touch-screen GUI.
- So easy to operate that no instructions are needed!
- Multi-lingual capability allowing use throughout the world.
- Message scheduler for date/time and event-based messages.
- NTCIP compatibility for fast, simple integration into standard ITS installations.
- Integrated GPS receiver.
- USB "thumb drive" interface for fast, easy software updates (via the SolarTech website), as well as data collection (with optional Radar).

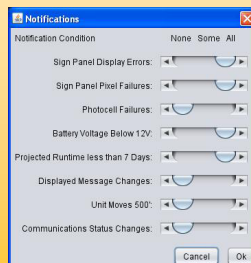
## Remote Control and Diagnostics (with Modem Option)

### COMMAND CENTER

Manage, Monitor and Segment your Fleet of Traffic Safety Equipment



- GPS mapping of all units
- Group control and management of fleet
- Limit Liability - permanent log records what messages are displayed, and when
- Automatic notifications and alerts



- Be notified of message change, location change, low battery, etc.
- Improve worker and driver safety
- Make fewer trips to the site by using remote diagnostics
- Have less "down time"

### SMARTPHONE CONTROL

- Full control of your message board from your smartphone.
- No software or apps required.
- Totally secure - IP Address, user name and password required.
- Messaging - system status, geo-location and diagnostics accessible from anywhere that your smartphone works.



## DISPLAY PANELS

|                               |                                       |
|-------------------------------|---------------------------------------|
| Panel Size .....              | 92" wide x 54" high (234 cm x 137 cm) |
| Pixel Size .....              | 1.77" x 1.77" (45 mm x 45 mm)         |
| Character Height .....        | 9" to 46" (23 cm to 117 cm)           |
| Matrix Size .....             | 27 x 48 pixels                        |
| Panel Construction .....      | All aluminum, modular construction    |
| Panel Face .....              | 3/16" polycarbonate, non-glare        |
| Characters per Line .....     | Up to twelve (12)                     |
| Number of Lines .....         | Up to four (4)                        |
| Number of Fonts .....         | Twelve (12)                           |
| Graphics Capability .....     | Full matrix with full animation       |
| Display Technology .....      | LED (amber, 592 nm)                   |
| Display Brightness .....      | >10,000 candela per square meter      |
| Display Life Expectancy ..... | 10 years typical                      |
| Viewing Angle .....           | 23° horizontal (minimum)              |

## TRAILER

|                            | Standard Trailer                               | Lift & Rotate Trailer                        |
|----------------------------|--|--|
| Length Overall (operating) | 112" (284 cm)                                  | 108" (274 cm)                                |
| Length Overall (towing)    | 112" (284 cm)                                  | 152" (386 cm)                                |
| Width Overall              | 92" (234 cm)                                   | 77" (196 cm)                                 |
| Width Across Fenders       | 75" (191 cm)                                   | 77" (196 cm)                                 |
| Height Traveling           | 92" (234 cm)                                   | 101" (257 cm)                                |
| Ground Clearance           | 13" (33 cm)                                    | 13" (33 cm)                                  |
| Height Operating           | 142" (360 cm)                                  | 142" (360 cm)                                |
| Weight of MB II Panel      | 1,560 lbs (708 kg) approx.                     | 2,000 lbs (907 kg) approx.                   |
| Coupler                    | 2" (50 mm) ball or<br>2.5" (64 mm) pintle ring | 2" (50 mm) ball or<br>3" (76 mm) pintle ring |
| Lifting Mechanism          | 1,000 lb. automatic<br>brake, winch and cable  | 1,000 lb. electric linear<br>actuator        |
| Axle/Suspension            | Torq flex, independent                         | Torq flex, independent                       |

## ENERGY SOURCE

|                                 |   |
|---------------------------------|---|
| Operating Voltage .....         | 12 volts DC (nominal)   |
| Battery Type .....              | 6 volt heavy-duty, deep cycle (GC-2)                                      |
| No. of Batteries .....          | Four (4) standard lead acid (flooded)                                     |
| Battery Bank Capacity .....     | 520 amp hours   |
| Battery Status Indicator .....  | Displays battery voltage, charging activity,<br>and low battery condition |
| Solar Array Construction .....  | Top-mounted solar panels in aluminum frame                                |
| Solar Array Power Output .....  | Standard 160 W (nominal)  |
| Solar Charge Controller .....   | Automatic, temperature compensated  |
| Auxiliary Battery Charger ..... | 45 amp, 120 volt AC   |

## MEGA-TECH CONTROL CONSOLE

|                            |  |
|----------------------------|--|
| Console Circuitry .....    | Ultra-low power solid state  |
| Console Touchscreen .....  | Waterproof, backlit, full-color GUI, intuitive<br>icon-driven, multi-lingual |
| Programming Software ..... | Proprietary, field upgradable  |
| Message Capacity .....     | Pre-programmed and user programmed<br>greater than 250 each                  |
| Time-Date Control .....    | Real time clock/calendar (365 day)   |
| Message Display Time ..... | User-selectable (0.1 to 99 seconds)  |
| Display Update Time .....  | Instantaneous  |
| Non-volatile Memory .....  | 512 MB compact flash   |
| Password Protection .....  | User selectable, multi-level   |
| Operator Interface .....   | Easy-to-use icons (no manual required)                                       |
| Connectivity .....         | Network (wired or wireless), NTCIP compatible                                |

## OPTIONAL FEATURES AND UPGRADES

### Sign Panel Upgrades

- Mega Flux Display - 60° viewing angle (available for all models)
- 30 x 48 pixels at 1.77" (45 mm) pixel pitch (MBII Lift & Rotate only)
- 30 x 56 pixels at 1.77" (45 mm) pixel pitch (MBII Lift & Rotate only)

### Brakes

- Hydraulic Surge Brakes (5,000 lb. capacity)
- Electric Brakes

### Battery Upgrades

| Type                                  | Number    | Capacity      |
|---------------------------------------|-----------|---------------|
| Lead-Acid (flooded)                   | Six (6)   | 780 amp hour  |
|                                       | Eight (8) | 1040 amp hour |
| Gel Cell or AGM<br>(maintenance free) | Four (4)  | 520 amp hour  |
|                                       | Six (6)   | 780 amp hour  |
|                                       | Eight (8) | 1040 amp hour |

### Solar Array Upgrades

- 240 watt
- 320 watt

### Remote Control Options

- Short range wireless - 802.11 WiFi
- Cellular Wireless - GPRS (CDMA/GSM) with GPS
- Solar Comm - secure, low cost GSM

### Security Options

- Alarm, including GPS Locator/Recovery System
- Battery box metal lockdown frame

### Radar Options

- Directional doppler K-Band. user-configurable KPH or MPH.  
Data collection and statistical analysis package included.

## OTHER SOLAR TECH PRODUCTS

### SILENT SENTINEL

Trailer and Vehicle Mount Arrow Boards

### SILENT MESSENGER

Full-Size Trailer-Mount Message Boards

### SILENT MESSENGER III

Small-Size Trailer and Vehicle Mount Message Boards

### SILENT MESSENGER IV

Small-Size Trailer and Vehicle Mount Message Boards

### SILENT ADVISOR

Low and High-Speed Application Radar Speed Trailers

### INCIDENT RESPONSE TRAILER

Work Zone Trailer with Cones and Barrels

### SOLAR-POWERED PORTABLE TOWER TRAILER

Platform for Cameras, Sensors and/or Lighting

### SOLARTRAK

Monitoring and GPS Tracking of Construction Equipment

All models meet or exceed the standards for Portable Changeable Message Signs and Flashing Arrow Panels as listed in the U.S. Federal Highway Administration (FHWA) Manual or Uniform Traffic Control Devices (MUTCD). Specifications subject to periodic updates as required without notice.



## SOLAR TECHNOLOGY, INC.

7620 Cetronia Rd. Allentown, PA 18106

Phone: 800-475-5442 or 610-391-8600

[www.solartechnology.com](http://www.solartechnology.com)