


**"I've got to say Thanks!**  
 First weekend with your GPS unit (SolarTrak) I discovered what you've been preaching to me. Customer booked a 1-day rental Friday for a 12k cushion and used the unit both Friday and Saturday. Now with your gizmos we have the proof to charge the extra day rental to him"  
 — Tim Jamal, Jamco Inc., Orlando, FL



So simple to get started.. simply attach a small SolarTrak tracker to each piece of equipment you'd like to monitor.

The SolarTrak tracker consists of a circuit board, a processor with a GPS chip, a cellular transceiver, an accelerometer to pick up engine vibrations and a back-up battery. With either an internal or external antenna, it receives signals from GPS satellites, and calculates its position.

In addition to location, the tracker also monitors battery voltage and engine hours, then sends that information via cell transmission to the SolarTrak servers. The servers record the data and transmit it to the SolarTrak website, where you (using your secure account) can access the information via your pc, laptop, tablet or smartphone.



[www.solar-trak.com](http://www.solar-trak.com)

Demo: 800-745-5442

Created by



7620 Cetronia Rd,  
 Allentown, PA



**Track, Monitor and Manage your Fleet**



SolarTrak is an internet-based, low-cost fleet management system that uses GPS and telemetry to track, monitor and manage equipment in the field.

- Maximize use of your fleet
- Locate equipment using GPS
- Track engine hours
- Get maintenance reminders
- Monitor battery levels
- Get alerts if a unit moves

[www.solar-trak.com](http://www.solar-trak.com)



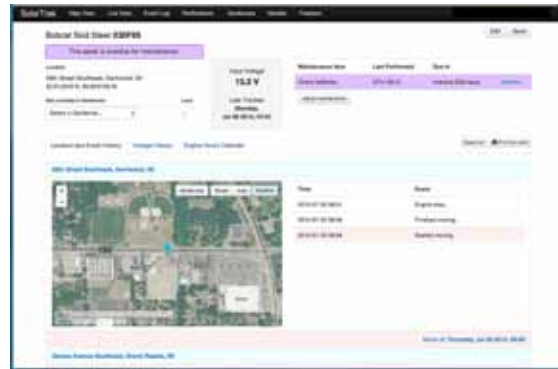
## Track, Monitor and Manage your Fleet... from your desktop, laptop or smartphone!



Locate your equipment quickly on satellite or street view maps. Click on icon to see details.



Create a geofence around a work zone, a customer's job site, or your own equipment yard - you set the parameters - then be notified by SolarTrak when your equipment moves in or out of the geofence.



See current location by address and GPS coordinates, by geofence, battery voltage and maintenance reminders from the Details screen. Tabs have Movement History (street or satellite views), Voltage and Engine Hours.



Engine-hours calendar shows when the equipment was running, and for how long - perfect for your billing department. Calendar records operation by day, week and month.



**Track, Monitor and Manage your Fleet  
... for under \$10 per month per asset!**

### Benefits:

- No more misplaced equipment - know where it is and when it's being used.
- No job delays - know before the job starts if the equipment is in place and ready to use.
- More efficient use of your Repair Crew - send them right to the affected machine..
- Accurate billing - detailed Engine-Hours report makes billing easy and accurate.
- Optimize the life of your assets - get alerts when maintenance is due.
- More service from your equipment, more efficient use of your time, and affordable... under \$10 per month per unit!

Ask about our lease or buy options.

Start with a **FREE DEMO**  
Call 800-475-5442 or visit:  
**[www.solar-trak.com](http://www.solar-trak.com)**

Created by **SOLARTECH**

7620 Cetronia Rd,  
Allentown, PA

