



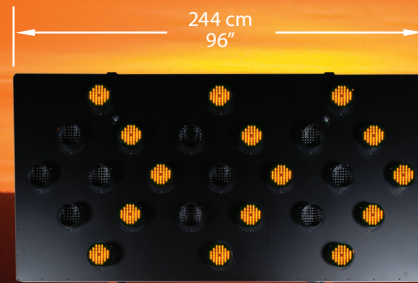
Harness the Power of the Sun

SILENT SENTINEL

ADVANCED WARNING ARROW PANELS



15 Lamp



25 Lamp



Model	Solar Array	Lamps
AB-0515	40 Watt	15
AB-0715	80 Watt	15

Model	Solar Array	Lamps
AB-0525	40 Watt	25
AB-0725	80 Watt	25

PAR 46 - LED Lamp

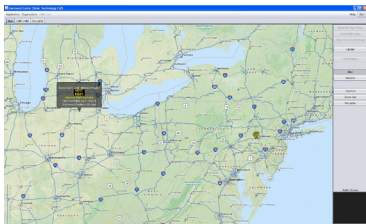
Designed and Built Exclusively by Solar Technology. Independent laboratory tests confirm our custom LED lamp is the brightest in the industry and has the greatest overall angularity.

Compared to other solar arrow board lamps, SolarTech's PAR 46 LED lamp:



- Is twice as bright
- Has superior angularity
- Provides enhanced conspicuously
- Is protected by a 10 year warranty

Remote Control and GPS Tracking*



ITS integration and fleet management

* Requires Solar Comm modem service

Control Module



Advanced Design Solid State Control Module
Microprocessor based technology for enhanced reliability. Fully-automatic fault protection.

Multi-Color LED Indicators
Display battery level, solar charger status and lamp intensity.

"Auto Track" Intensity Control.
Provides optimal visibility with minimal energy consumption.

Integral Solar Charge Controller
Fully automatic, temperature compensated. All solid state.



LAMP PANEL

Panel Size	96" x 48" (244 cm x 122 cm)
Panel Construction	All aluminum with welded frame
Panel Finish	Matte black baked enamel finish
Number of Lamps	15 or 25
Lamp Intensity	1,000 Candela (typical), 750 Candela (minimum)
Lamp Beam Angle	30° horizontal x 6° vertical (minimum)
Lamp Construction	LED (21 per lamp) in unbreakable sealed polycarbonate housing
Lamp Shrouds	360° high-impact plastic
Rear Panel Indicators	Three (3) LED

TRAILER

Length Overall.....	100" (254 cm)
Length excluding Tongue	53" (135 cm)
Width Overall.....	96" (244 cm)
Width Across Fenders	75" (190 cm)
Height Traveling.....	92" (234 cm)
Height Operating.....	134" (340 cm)
Ground Clearance.....	13.5" (34 cm)
Weight.....	1,180 lbs. (535 kg) approximately
Hitch.....	2" ball (50 mm) (Class II) or 2.5" (64 mm) pintle ring
Lifting Mechanism.....	1,000 lb. (454 kg) capacity (minimum) automatic brake winch and cable

ENERGY SOURCE

Operating Voltage	12 Volts DC (nominal)
Battery Type	6 volt heavy duty, deep cycle (GC-2)
Number of Batteries.....	Two (2) standard lead acid (flooded) with Auxiliary Batteries.....
	Four (4) standard lead acid (flooded)
Battery Capacity	260 amp hours
with Auxiliary Batteries.....	520 amp hours
Battery Status Indicator.....	Displays full charge, normal and low battery condition
Solar Array Construction	Top-mounted solar panels in aluminum frame
Solar Array Power Output.....	40 or 80 watts - field-upgradable
Solar Charge Controller	Fully automatic, temperature compensated

CONTROLLER

Controller Circuitry	Ultra-low power solid state
Lamp Patterns	All standard 15 and 25 lamp flashing and sequential
Lamp Flash Rate	30 per minute
Lamp Dimming.....	Manual and automatic
Lamp Dimming Ratio	50%, fully dimmed at approximately five footcandles
Lamp Power Drivers.....	Current limited and thermal overload protected with "soft start" feature
Low Voltage Disconnect	10.70 volts
High Voltage Disconnect.....	15.10 volts

OPTIONAL FEATURES AND UPGRADES

Battery Upgrades

- Four (4) standard flooded batteries
- Two (2) maintenance-free (Gel-Cell or AGM)
- Four (4) maintenance-free (Gel-Cell or AGM)

Auxiliary Battery Chargers

- 45 amp, 120 volt AC line-powered
- 40 or 55 amp, 230 volt AC line-powered

Traffic Cone Carrier

- Holds standard 18" (46 cm) and 28" (71 cm) cones

OTHER SOLAR TECH PRODUCTS

SILENT SENTINEL

Vehicle Mount Arrow Boards

SILENT MESSENGER

Full-Size Trailer-Mount Message Boards

SILENT MESSENGER II

Mid-Size Trailer and Vehicle Mount Message Boards

SILENT MESSENGER III

Small-Size Trailer and Vehicle Mount Message Boards

SILENT MESSENGER IV

Small-Size Trailer and Vehicle Mount Message Boards

SILENT ADVISOR

Low and High-Speed Application Radar Speed Trailers

INCIDENT RESPONSE TRAILER

Work Zone Trailer with Cones and Barrels

SOLAR-POWERED PORTABLE TOWER TRAILER

Platform for Cameras, Sensors and/or Lighting

SOLARTRAK

Monitoring and GPS Tracking of Construction Equipment

All models meet or exceed the standards for Flashing Arrow Panels as listed in the U.S. Federal Highway Administration (FHWA) Manual or Uniform Traffic Control Devices (MUTCD). Specifications subject to periodic updates as required without notice.

*For the latest software updates, user-guides,
news and information please visit us online at:
www.solartechology.com*



SOLAR TECHNOLOGY, INC.
7620 Cetronia Rd. Allentown, PA 18106
Phone: 800-475-5442 or 610-391-8600
www.solartechology.com