

Smart Zone

SolarTech's Work Zone ITS software

DYNAMIC MERGE SYSTEM

SAFETY FIRST

Smart Zone's Dynamic Merge System provides a flexible approach to work zone lane closures by implementing a late or early merge option based on current traffic conditions.

Utilizing traffic detection sensors (Side Fire, Doppler, etc...) and dynamically activated message boards controlled by Smart Zone software, this system presents motorists with real-time lane merge information.

Sensors placed upstream from a work zone continuously monitor traffic volume and speed to determine the best solution to keep traffic flowing. As traffic conditions change, message boards will automatically update to inform motorists of the current merge strategy.

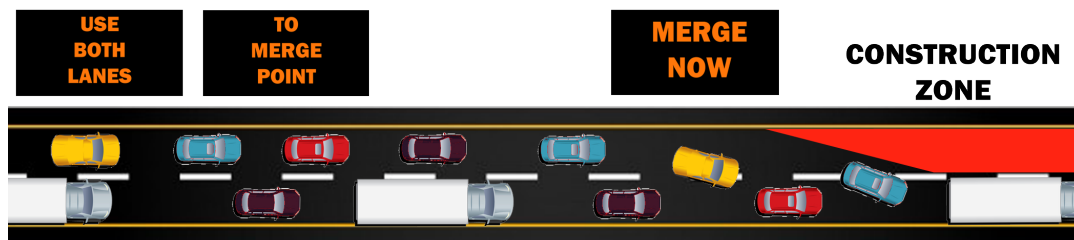
LATE OR EARLY MERGE

A late merge approach benefits motorists during times of high traffic volume, as it allows vehicles to continue traveling until just prior to the work zone area. This option maximizes the use of all travel lanes, encourages continuous traffic flow, as well as zipper merging.

Alternatively, when the traffic volume is low and average speed is normal, an early merge method has drivers merging lanes well before the work zone. Implementing this strategy will aid in avoiding congestion, and maintain a steady flow of traffic.

Smart Zone offers remote monitoring and message updating, automatic user-notification via text message or email, and is designed to work with any NTCIP traffic management system.

SCENARIOS



LATE MERGE SCENARIO



EARLY MERGE SCENARIO

SmartZone: Putting the "Smart" in Smart Work Zones



www.solartechnology.com

610-391-8600 • smartzone@solartechnology.com