

# Silent Messenger

## PRODUCT GUIDE

### Incident Response Trailer Cones Only (IRT-C)

The IRT-C, a “Cones Only” version of the Incident Response Trailer, offers a quick and efficient way to detour traffic, block lanes, and deter access to areas, while simultaneously displaying a corresponding message.

Equipped with a mid-sized message board and up to 81 cones, the sturdy steel trailer is easily transported, quick to set up, and easy to program.

The display screen measures 92” wide by 54” high, and allows you to add a message to slow traffic, reconfigure lanes or warn of dangers ahead.



**5 Year**  
LIMITED  
Warranty  
SINCE 2009

OPTIONAL  
**LIFETIME**  
CELLULAR  
SERVICE!

### OPTIONAL REMOTE COMMUNICATIONS\*

When choosing this option, your IRT will come with a GPS receiver, cellular transceiver, and **FREE lifetime cellular service\***. Use with SolarTech’s Command Center software to track your equipment.

Access units from a map or list.

Control units individually or broadcast to a group.

Manage your fleet from your laptop, PC, or smartphone... without leaving your desk!

You can build a message library, share messages between boards, schedule messages and more.

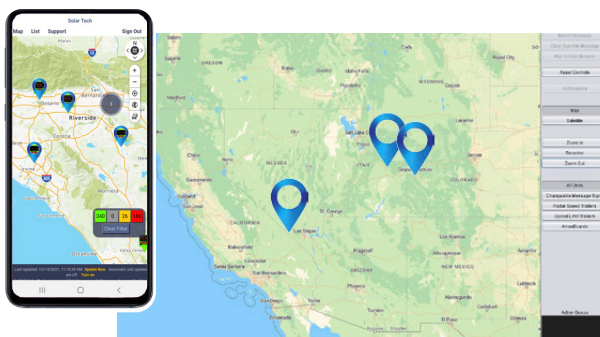
Get automatic email notifications when a message changes, if the battery voltage is low, if a pixel fails, or the unit moves.

Keep tabs on your whole fleet.

#### EASY-TO-USE CONTROLLER

The touch-screen controller needs no manual - it’s that easy to use! Includes:

- » Password protection
- » Intuitive icons for ease of use
- » Scheduling capability
- » Fully networkable
- » NTCIP version 3 compatible



**No more misplaced equipment... fewer problems... less downtime!**

Learn more at [www.solartechtechnology.com](http://www.solartechtechnology.com)

# Silent Messenger

## Incident Response Trailer Cones Only (IRT-C)

### Display Panel

Panel Size .....	92" x 54" (234 cm x 137 cm)
Pixel Array/Size.....	27 x 48 pixel array with 1.77" (45 mm) pitch
Character Height.....	12" to 38" (30.5 cm to 96.5 cm)
Panel Construction.....	All aluminum, modular construction
Panel Face.....	3/16" polycarbonate, non-glare
Number of Fonts.....	Twelve (12)
Graphics Capability.....	Full matrix with full animation
Display Technology .....	LED (amber, 592 nm)
Display Brightness.....	>10,000 candela per square meter
Display Life Expectancy .....	10 years typical
Viewing Angle .....	>60°

### Trailer

Length Overall (in use) .....	180 inches (457 cm)
Width Overall.....	92 inches (234 cm)
Height Traveling.....	108 inches (274 cm)
Height Operating.....	164 inches (417 cm)
Ground Clearance .....	13 inches (33 cm)
Weight .....	3,400 lbs. (1,542 kg) approximately (maximum)
Coupler (Class III) .....	2 inch (50 mm) or 3 inch (76 mm) pintle ring
Brakes.....	7,500 lb. (3,402 kg) hydraulic surge
Axle/Suspension.....	Torq flex, independent
Lifting Mechanism.....	Lift & Rotate, 1,000 lbs (453.6 kg) electric linear actuator
Traffic Devices .....	Up to eighty-one (81) cones (28" high, 10 lbs) with retro-reflective markings. There are 9 poles on the Cones Only Unit, each can hold up to 9 cones.

### Mega-Tech Control Console

Console Circuitry .....	Ultra-low power solid state
Console Touchscreen.....	Weather-resistant, backlit, 10.4" full-color GUI, intuitive icon-driven, multi-lingual
Programming Software .....	Proprietary, field upgradable (for units not connected to Command Center)
Message Capacity.....	Pre-programmed and user programmed > 250 each
Time-Date Control.....	Real time clock/calendar (365 day)
Message Display Time.....	User-selectable (0.1 to 99 seconds)
Display Update Time.....	Instantaneous
Non-volatile Memory.....	16 GB Micro SD card
Password Protection.....	User selectable, multi-level
Operator Interface.....	Easy-to-use icons (no instruction manual required)

### Energy Source

Operating Voltage.....	12 volts DC (nominal)
Battery Type.....	6 volt heavy duty, deep cycle (GC-2)
Number of Batteries.....	Four (4) standard lead acid (flooded)
Battery Bank Capacity.....	520 amp hours
Battery Status Indicator .....	Displays battery voltage, charging activity and low battery condition
Solar Construction .....	Top-mounted solar panels in aluminum frame
Solar Power Output.....	Standard 160 watt (nominal)
Solar Charge Controller.....	Automatic, temperature compensated, MPPT (Maximum Power Point Tracking)



Custom Colors Available

## OPTIONS AND UPGRADES

### Remote Communication Option with MegaTech Control Console

Includes GPS receiver, cellular transceiver, and FREE lifetime cellular service. Remotely access and track your Incident Response Trailer.

*\*With this option, cellular service is provided free of charge, and is limited to carrier supported generational wireless technology.*

### Solar Array Options

- » 220 watt
- » 330 watt

### Battery Upgrades

Four (4) maintenance-free Gel-Cell or AGM - 520 amp hour capacity

### Security Option

- » Anti-theft steel battery frame bolted to trailer
- » Vandal-proof battery box with reinforced steel cage

### Battery Charger Upgrades

- » 45 amp, 120 volt AC
- » 55 amp, 120 volt AC
- » 90 amp, 120 volt AC

### Radar Options

Directional doppler K-Band, user-configured KPH or MPH  
Data collection and statistical analysis package included.

### Brakes

- » Electric Brakes

Learn more at [www.solartechology.com](http://www.solartechology.com)