



*As Reliable as the Sun*

# Silent Messenger MTO Message Board MTO Approved

## USES AND ADVANTAGES OF MB-3056-MTO

The "Silent Messenger" MTO Message Board is a rugged portable changeable message board designed to provide communications to improve traffic flow and safety in Canadian highway work zones.

The message board measures 126" w x 76" h, powered by a combination of solar panels and batteries, mounted on a sturdy steel trailer with a lift and rotate telescoping mast.

The sign comes with integrated modem, GPS, and free five year cellular service. Use with SolarTech's Command Center software for remote communications - messages can be changed and managed remotely from an office pc or a smartphone.

Details about MTO compliance on back and at [www.roadauthority.com](http://www.roadauthority.com).

## REMOTE CONTROL AND GPS TRACKING INCLUDED!

Command Center software allows you to track your equipment using the built-in modem and GPS system.

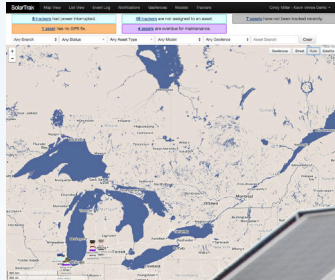
Access units from a map or list. Control units individually or broadcast to a group.

Manage your fleet from your laptop, pc or smartphone... without leaving your desk!

You can build a message library, share messages between boards, schedule messages and more.

Get automatic email notifications when a message changes, if the battery voltage is low, if a panel fails, or the unit moves.

Keep tabs on your whole fleet. No more misplaced equipment... fewer problems... less downtime!



## EASY-TO-USE CONTROLLER

The touch-screen controller needs no manual - it's that easy to use!



Touch-screen controller includes:

- GPS, modem & 5 years of cellular service
- Password protection
- Intuitive icons for ease of use
- Switch languages with one click
- Scheduling capability
- Fully networkable
- NTCIP version 2 compatible
- Automatic software upgrades



# Silent Messenger MTO Message Board



## DISPLAY

Panel Size ..... 126" wide x 76" high (320 cm x 193 cm)  
 Panel Construction ..... All aluminum, modular construction  
 Panel Face ..... 3/16" polycarbonate, non-glare  
 Matrix Size ..... 30 x 56 pixels (standard)  
 Pixel Pitch ..... 2.2" x 2.2" (56 mm x 56 mm)  
 Number of Fonts ..... Two: MTO2 and MTO4  
 Character Height ..... 11" to 66" (280 mm to 1680 mm)  
 Graphics Capability ..... Full matrix with full animation  
 Display Technology ..... LED (amber, 592 nm)  
 Display Brightness ..... >10,000cd/m2 (candela per sq. meter)  
 Viewing Angle ..... 23° horizontal (minimum)  
 Lifting Mechanism ..... 2,000 lb. capacity electro-hydraulic

## TRAILER

Length & Width Overall ..... 180" (457 cm) long x 92" (234 cm) wide  
 Width Across Fenders ..... 92" (234 cm)  
 Height Traveling ..... 103" (262 cm)  
 Height Operating ..... 162" (412 cm)  
 Ground Clearance ..... 13" (33 cm)  
 Weight ..... 2,400 lbs. (1,089 kg) min., 2,960 lbs. (1,343 kg) max.  
 Coupler (Class III) ..... 2" (50 mm) ball or 3" (76 mm) pintle ring  
 Axle/Suspension ..... Torq flex, independent

## MEGA-TECH CONTROL CONSOLE

Console Circuitry ..... Ultra-low power solid state  
 Console Touchscreen ..... Waterproof, backlit, full-color GUI, intuitive icon-driven, multi-lingual  
 Programming Software ..... Proprietary, field upgradable  
 Message Capacity ..... Pre-programmed and user-programmed - greater than 250 each  
 Time-Date Control ..... Real-time clock/calendar (365 day)  
 Message Display Time ..... User-selectable (0.1 to 99 seconds)  
 Display Update Time ..... Instantaneous  
 Non-Volatile Memory ..... Separate backup battery  
 Password Protection ..... User-selectable, multi-level  
 Operator Interface ..... Easy-to-use icons (no manual required)  
 Connectivity ..... Networkable (wired or wireless) and NTCIP compatible (Ethernet and RS-232)

## ENERGY SOURCE

Operating Voltage ..... 12 volts DC (nominal)  
 Batteries ..... Four (4) heavy duty AGM 6 volt batteries  
 Battery Bank Capacity ..... 520 amp hours  
 Battery Status Indicator ..... Displays battery voltage, charging activity and low battery condition  
 Solar Array Construction ..... Top mounted solar panels in aluminum frame  
 Solar Array Power Output ..... Standard 320 watt (nominal)  
 Solar Charge Controller ..... Automatic, temperature compensated  
 Auxiliary Battery Charger ..... 45 amp, 120 volt AC, line powered  
 Battery Security ..... Anti-theft steel battery frame bolted to trailer

**BATTERY CHARGER UPGRADE OPTION:** 90 amp - 120 volt AC

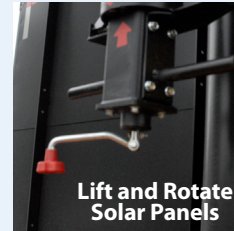
**RADAR OPTION:** Directional doppler K-Band. User-configurable KPH or MPH. Data Collection and Statistical Analysis Package included.



Cellular Starter Kit



GPS and Cellular Remote Control



Lift and Rotate Solar Panels



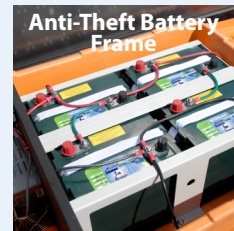
AGM Batteries



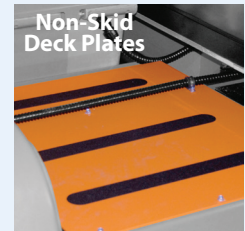
Bull's Eye Level



Sign Panel Compass



Anti-Theft Battery Frame



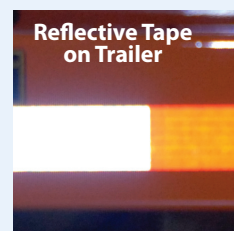
Non-Skid Deck Plates



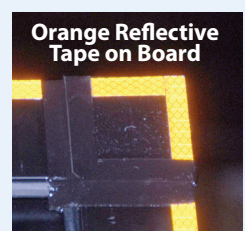
3" Pintle Ring Coupler



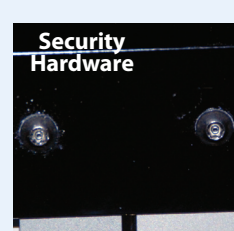
6-pin Round Trailer Plug



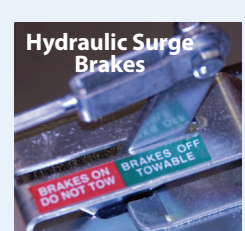
Reflective Tape on Trailer



Orange Reflective Tape on Board



Security Hardware



Hydraulic Surge Brakes



**SOLAR TECHNOLOGY, INC.**  
 7620 Cetronia Rd. Allentown, PA 18106  
 Phone: 800-475-5442 or 610-391-8600

[www.solartechology.com](http://www.solartechology.com)