

THE INFORMATION CONTAINED IN THIS DRAWING IS THE SOLE PROPERTY OF SOLAR TECHNOLOGY, INC. ANY REPRODUCTION IN PART OR WHOLE WITHOUT THE WRITTEN PERMISSION OF SOLAR TECHNOLOGY, INC. IS PROHIBITED.

8 7 6 5 4 3 2 1

D

C

B

A

1/2"

0"

12"

13 1/4"

CL OF HINGE 24"

34 3/4"

36"

36"

34 3/4"

CL OF HINGE 24"

13 1/4"

12"

0"

REMOVE EXISTING SCREWS TO MOUNT KEEPER (4 PLACES 12" & 36" LOCATIONS)

Flap Kit shown in right hand arrow configuration to suit Ontario requirements.

Arrow Board Flap Kit
#AM-25-925
Sheet 1 of 2
8/24/2021

8 7 6 5 4 3 2 1

THE INFORMATION CONTAINED IN THIS DRAWING IS THE SOLE PROPERTY OF SOLAR TECHNOLOGY, INC. ANY REPRODUCTION IN PART OR WHOLE WITHOUT THE WRITTEN PERMISSION OF SOLAR TECHNOLOGY, INC. IS PROHIBITED.

8 7 6 5 4 3 2 1

D

C

B

A

1/2"

0"

12"

13 1/4"

CL OF HINGE 24"

34 3/4"

36"

34 3/4"

36"

CL OF HINGE 24"

13 1/4"

12"

0"

REMOVE EXISTING SCREWS TO MOUNT KEEPER (4 PLACES 12" & 36" LOCATIONS)

Flap Kit shown in right hand arrow configuration to suit Ontario requirements.

Arrow Board Flap Kit
#AM-25-925
Sheet 1 of 2
8/24/2021

8 7 6 5 4 3 2 1

THE INFORMATION CONTAINED IN THIS DRAWING IS THE SOLE PROPERTY OF SOLAR TECHNOLOGY, INC. ANY REPRODUCTION IN PART OR WHOLE WITHOUT THE WRITTEN PERMISSION OF SOLAR TECHNOLOGY, INC. IS PROHIBITED.

8 7 6 5 4 3 2 1

D
C
B
A

1/2"
0"
12"
13 1/4"
CL OF HINGE 24"
34 3/4"
36"
36"
34 3/4"
CL OF HINGE 24"
13 1/4"
12"
0"

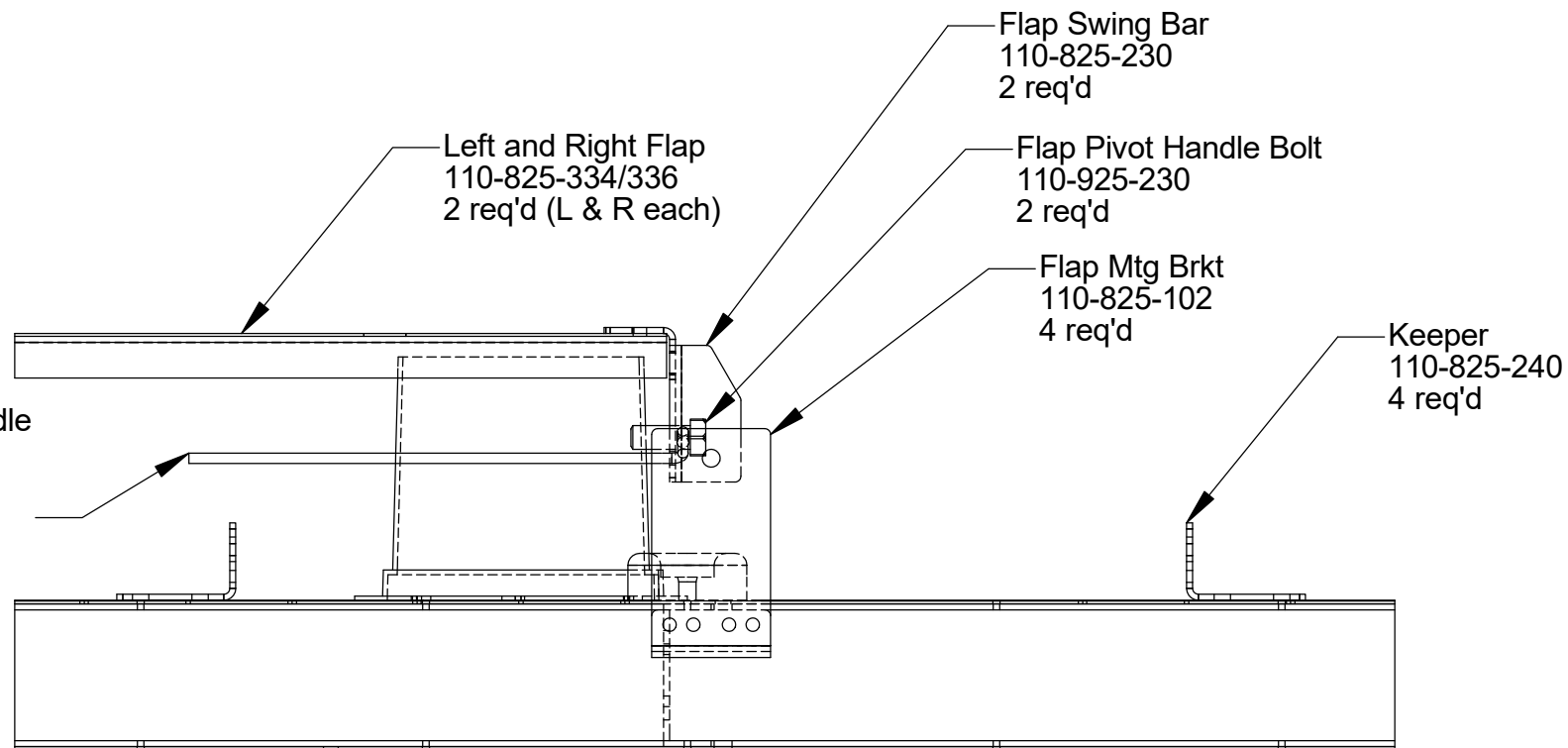
REMOVE EXISTING SCREWS TO MOUNT KEEPER (4 PLACES 12" & 36" LOCATIONS)

Flap Kit shown in right hand arrow configuration to suit Ontario requirements.

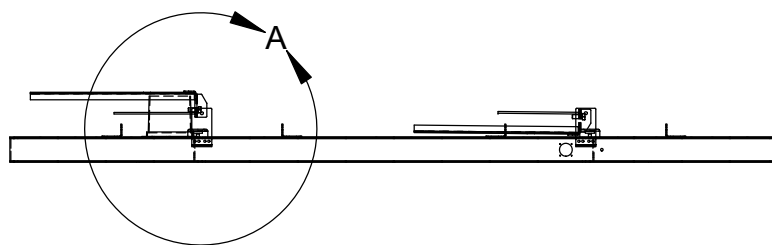
Arrow Board Flap Kit
#AM-25-925
Sheet 1 of 2
8/24/2021

8/24/2021

THE INFORMATION CONTAINED IN THIS DRAWING IS THE SOLE PROPERTY OF
SOLAR TECHNOLOGY, INC. ANY REPRODUCTION IN PART OR WHOLE WITHOUT
THE WRITTEN PERMISSION OF SOLAR TECHNOLOGY, INC. IS PROHIBITED.



DETAIL A
SCALE 1 : 4



Bottom View

Arrow Board Flap Kit
#AM-25-925

Sheet 2 of 2

8/24/2021