



As Reliable as the Sun

Solar Powered Portable 30' Tower Series Options

Easy to tow and set up, the 30' Tower Trailer is designed to provide a stable and adjustable base for many applications. The series offers a multitude of customizable options, including:

- Camera Systems
- Speed Detection Systems
- Various Sensors

FEATURES:

- Three-stage telescoping and rotating mast of galvanized steel with inter-stage roller bearing technology and variable mast deployment height. Mast can be raised to, and is stable at, any height between 13'5" (min.) and 30' (max)
- Truly Solar Powered: Continuous, year-round, uninterrupted power source capable of providing a minimum of 950 watt-hours per day of electrical power (nominal 75 amp hours per day at 12.5 volts DC)
- Portable: Tower system can be towed to any location for temporary applications
- Heavy-Duty: All steel trailer frame construction
- Sturdy polyethylene fenders and lockable battery compartment
- Torsion-type axle for a smooth, stable ride, as well as higher ground clearance
- Four (4) 3,000 lb. swivel jacks for easy leveling and setup
- Polyamide Epoxy primer for outstanding rust and corrosion protection
- Acrylic Urethane finish for exceptional appearance and durability
- 5 Year Warranty
- ISO:9001:2015 Certified Design and Manufacturing - the ultimate in quality assurance.

5 Year
LIMITED
Warranty
SINCE 2009

www.solartechtechnology.com



Solar Powered 30 Foot Tower Trailer Options

TRAILER

Length Operating	119 inches (302 cm)
Length Traveling	(without attachments) 202 inches (514 cm)
Width	79 inches (201 cm)
Height Operating	13.5 feet (minimum) up to 30 feet (maximum)-(914 cm)
Height Traveling	85 inches (216 cm)
Ground Clearance	13 inches (33 cm) minimum
Weight	2,500 lbs. (1134 kg) approx. (maximum)
Tower Rating.....	Maximum load: 45 lbs. (21 kg) Maximum surface area: 4 square feet (3716 sq cm)
Coupler (Class III)	2" (50 mm) ball or 2-1/2" (64 mm) pintle ring
Axle/Suspension	Torq-Flex - independent

ENERGY SOURCE

Operating Voltage	12 volts DC (nominal)
Battery Type	6 volt heavy duty, deep cycle (GC-2)
Number of Batteries	Up to twelve BCI-GC2 batteries for 1,560 amp-hr capacity
Battery Status Indicator	Displays full-charge, normal and low battery condition
Solar Array Construction	Trailer-mounted solar panels in aluminum frame
Solar Array Power Output	Up to 660 watt solar array - can be tilted and rotated
Solar Charge Controller	Temp compensated MPPT

BATTERY AND ELECTRIC BRAKE OPTIONS AND UPGRADES

AUXILIARY BATTERY OPTIONS:

.....	45 amp, 120 volt AC
.....	55 amp, 120 volt AC
.....	90 amp, 120 volt AC

BATTERY UPGRADE Flooded, AGM maintenance-free batteries or Gel Cell
may be added- up to a total of 12 batteries

BATTERY SECURITY OPTIONS

.....	Anti-Theft Steel Battery Frame Bolted to Trailer
.....	Vandal Proof Battery Enclosures

ELECTRIC BRAKES Upgrade available

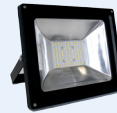
ADDITIONAL OPTIONS

CAMERA SYSTEM

- AXIS Camera: Model M5525-E
- Bosch AUTODOME IP starlight 7000i
- Alternative camera systems available upon request



LAMP OPTIONS



- Choose four (4) or eight (8) 50-watt, 4,250 lumen fixtures, directionally adjustable. Maximum (8-Lamp): 400 watts, 34,000 lumens*

* Not able to be continuously powered by solar year round.



8 Lamp Array

SIDE-FIRE RADAR SYSTEMS



SPTT-3000 -in lowered position



SPTT-3000 with camera - in lowered position



P/N 500-001-030 Rev. B 2021

SOLAR TECHNOLOGY, INC.

7620 Cetronia Rd. Allentown, PA 18106
Phone: 800-475-5442 or 610-391-8600

www.solartechnology.com

