



*As Reliable as the Sun*

# Solar Powered Portable 30' Tower Series Options

Easy to tow and set up, the 30' Tower Trailer is designed to provide a stable and adjustable base for many applications. The series offers a multitude of customizable options, including:

- Camera Systems
- Speed Detection Systems
- Various Sensors

## FEATURES:

- Three-stage telescoping and rotating mast of galvanized steel with inter-stage roller bearing technology and variable mast deployment height. Mast can be raised to, and is stable at, any height between 13'5" (min.) and 30' (max)
- Truly Solar Powered: Continuous, year-round, uninterrupted power source capable of providing a minimum of 950 watt-hours per day of electrical power (nominal 75 amp hours per day at 12.5 volts DC)
- Portable: Tower system can be towed to any location for temporary applications
- Heavy-Duty: All steel trailer frame construction
- Sturdy polyethylene fenders and lockable battery compartment
- Torsion-type axle for a smooth, stable ride, as well as higher ground clearance
- Four (4) 3,000 lb. swivel jacks for easy leveling and setup
- Polyamide Epoxy primer for outstanding rust and corrosion protection
- Acrylic Urethane finish for exceptional appearance and durability
- 5 Year Warranty
- ISO:9001:2015 Certified Design and Manufacturing - the ultimate in quality assurance.

**5 Year**  
LIMITED  
**Warranty**  
SINCE 2009



[www.solartechnology.com](http://www.solartechnology.com)

# Solar Powered 30 Foot Tower Trailer Options

## TRAILER

Length Operating .....	119 inches (302 cm)
Length Traveling .....	(without attachments) 202 inches (514 cm)
Width .....	79 inches (201 cm)
Height Operating .....	13.5 feet (minimum) up to 30 feet (maximum)-(914 cm)
Height Traveling .....	85 inches (216 cm)
Ground Clearance .....	13 inches (33 cm) minimum
Weight .....	2,500 lbs. (1134 kg) approx. (maximum)
Tower Rating.....	Maximum load: 45 lbs. (21 kg) Maximum surface area: 4 square feet (3716 sq cm)
Coupler (Class III) .....	2" (50 mm) ball or 2-1/2" (64 mm) pintle ring
Axle/Suspension .....	Torq-Flex - independent

## ENERGY SOURCE

Operating Voltage .....	12 volts DC (nominal)
Battery Type .....	6 volt heavy duty, deep cycle (GC-2)
Number of Batteries .....	Up to twelve BCI-GC2 batteries for 1,560 amp-hr capacity
Battery Status Indicator .....	Displays full-charge, normal and low battery condition
Solar Array Construction .....	Trailer-mounted solar panels in aluminum frame
Solar Array Power Output .....	Up to 480 watt solar array - can be tilted and rotated
Solar Charge Controller .....	Temp compensated MPPT
Auxiliary Automatic Battery Charger .....	Built-in 45 amp battery charger: recharge in 30 hrs or less
Battery Security.....	Anti-theft steel battery frame bolted to trailer

## BATTERY AND ELECTRIC BRAKE OPTIONS

Auxiliary Battery Charger Upgrades.....	90 amp, 120 VAC, 60 Hz - will recharge batteries in less than 18 hours
Battery Upgrade .....	Flooded, AGM maintenance-free batteries or Gel Cell may be added- up to a total of 12 batteries
Vandal-Proof Battery Enclosures .....	Upgrade available
Electric Brakes .....	Upgrade available

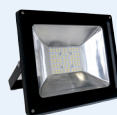
## ADDITIONAL OPTIONS

### CAMERA SYSTEM

- AXIS Camera: Model M5525-E
- Bosch AUTODOME IP starlight 7000i
- Alternative camera systems available upon request



### LAMP OPTIONS



- Choose 4 or 8 50-watt, 4600 lumen fixtures, directionally adjustable. Maximum (8-Lamp): 400 watts, 36,800 lumens\*

\* Not able to be continuously powered by solar year round.



8 Lamp Array

### SIDE-FIRE RADAR SYSTEMS



SPTT-3000 -in lowered position



SPTT-3000 with camera - in lowered position



Rev. A 2019

**SOLAR TECHNOLOGY, INC.**  
7620 Cetronia Rd. Allentown, PA 18106  
Phone: 800-475-5442 or 610-391-8600

[www.solartechnology.com](http://www.solartechnology.com)

