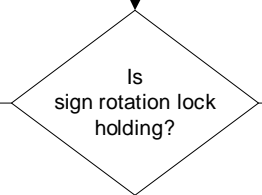


**Adjust Locking Mechanism Control Arm**

- Loosen nuts at both ends of the control arm.  
NOTE: at one end of the control arm the clevis and nut are left handed threads the other end is normal.
- Turn the control arm to lengthen or shorten the arm.
- Tighten nuts at both ends of the control arm.

**Reinspect Locking Mechanism Control Arm**

- Move sign rotation lock lever to the locked position
- Measure the amount of bend on the control arm.  
Note: The control arm should bend about 1/2" when in the locked position and straighten out in the unlocked position.
- Readjust the control arm if necessary.

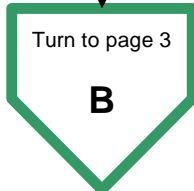


**Replace Locking Cams**

- Replace left and right locking cams.  
Note: locking mechanism shown disassembled for display purposes.

**Unlock Sign Rotation Lock**

- Move rotation lock to the unlocked position
- Place sign in the travel position.  
**NOTE: DO NOT LOCK SIGN WHEN IN TRAVEL POSITION.** This will lead to excessive cam wear.



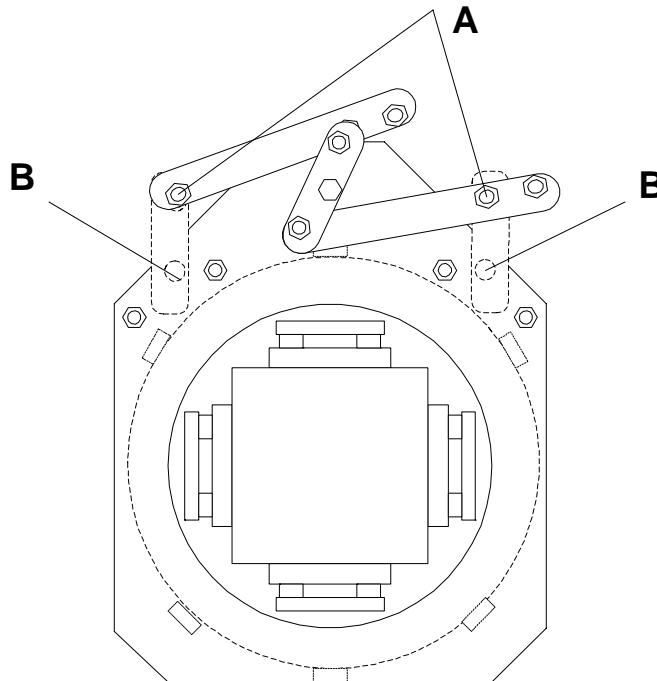
From page 1

**B**

**Replace Locking Cams**

### Remove Locking Cams

- ◆ Replace left and right locking cams.
- ◆ Remove bolts holding cams to connecting links ( item A ).
- ◆ Remove bolts holding cams to rotor plate ( item B ).
- ◆ Slide cams out from between rotor plates.



### Reinstall Locking Cams

- ◆ Slide new cams into position. Note: Cam holes are offset. Narrow side of cam goes toward center of mast.
- ◆ Reinstall bolts holding cams to rotor plate ( item B ).
- ◆ Reinstall bolts holding cams to connecting links ( item A ). Note: apply anti-seize compound to bolts to keep linkage moving freely.
- ◆ Readjust locking mechanism control arm. Instructions on page 2.

**End  
of  
Process**